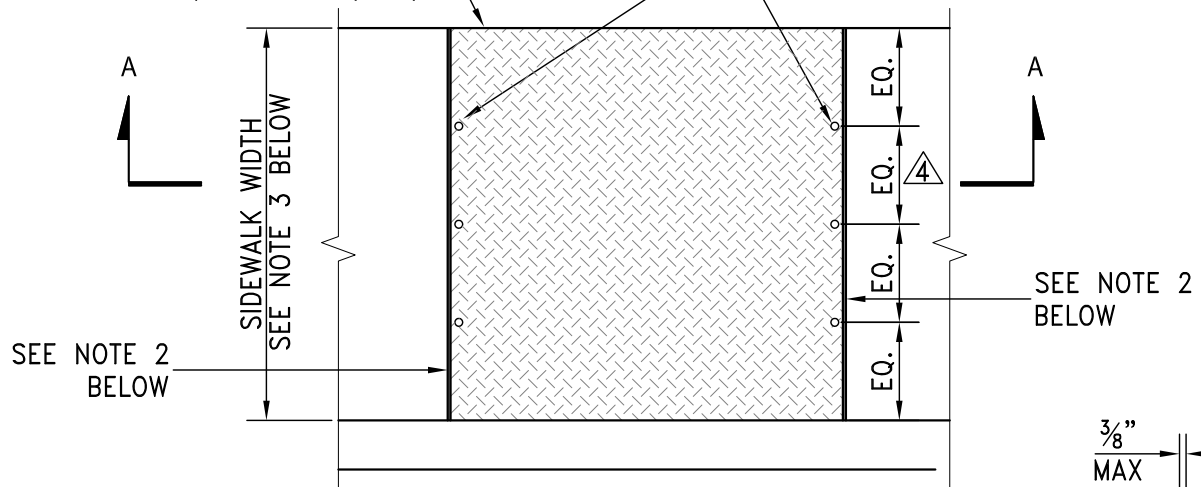
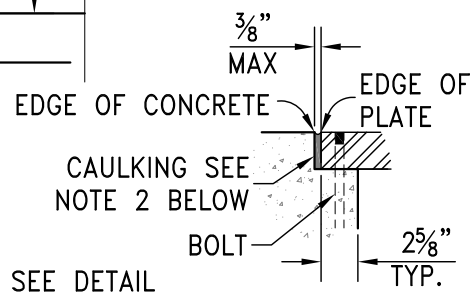


SOLID STEEL DIAMOND PLATE  
W/ NON-SKID PATTERN  
12" WIDE X 1/2" THICK (MIN.)

BOLT PLATE TO CONCRETE WITH 3/8" DIA.  
BEVELED HEAD BOLTS, FLUSH WITH PLATE.  
BOLT SPACING FOR 4' SIDEWALK SHOWN

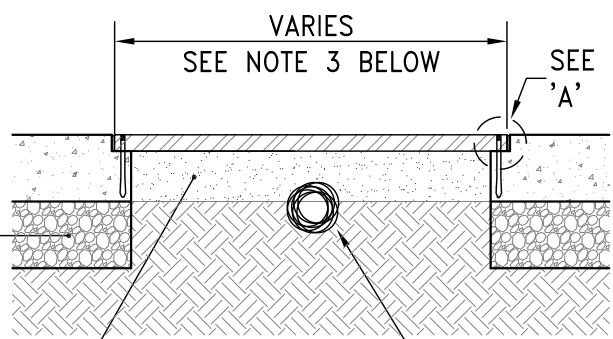


**PLAN**



**DETAIL 'A'**

4" MIN. TYPE 2, CLASS B,  
CRUSHED AGGREGATE BASE  
COMPACTED TO MINIMUM  
95% RELATIVE COMPACTION



**SECTION A-A**

PLACE DG OVER EXPOSED  
ROOT AND HAND TAMP

EXISTING TREE ROOT  
(SHOWN FOR ILLUSTRATION ONLY)

**NOTES:**

1. CONTRACTOR SHALL REMOVE ONLY THE EXISTING CONCRETE WITHIN THE ROOT MITIGATION LIMITS. THE CONTRACTOR SHALL EMPLOY AN ISA CERTIFIED ARBORIST TO PERFORM ROOT CROWN EXCAVATION / ROOT PRUNING. ISA CERTIFIED ARBORIST SHALL COORDINATE THIS WORK WITH THE CITY OF RENO URBAN FORESTER (334-2270).
2. SET PLATE FLUSH WITH ADJACENT CONCRETE AND PROVIDE 3/8" MAX GAP BETWEEN STEEL PLATE AND EDGE OF SIDEWALK. FILL GAP WITH CAULKING AFTER PLACEMENT OF PLATE. CAULKING MATERIAL SHALL BE GE SILICONE II\* W/D SUPREME, OR APPROVED EQUAL. COLOR SHALL BE WHITE.
3. ROOT PLATE WIDTH SHALL MATCH WIDTH OF SIDEWALK. ROOT PLATE LENGTH VARIES, FINAL LENGTH SHALL BE DETERMINED IN THE FIELD BY THE CERTIFIED ARBORIST AND ENGINEER.
4. BOLTS: 3/8" DIA x 2 7/8" LONG DYNABOLT SLEEVE ANCHOR RAMSET REDHEAD FS-3826 OR APPROVED EQUAL. SIDEWALK WIDER THAN 4FT, BOLTS SHALL BE PLACED AT 18" O.C. FOR WIDTH OF SIDEWALK.
5. CONTRACTOR SHALL PROTECT TREES AT ALL TIMES, INCLUDING BUT NOT LIMITED TO TRUNKS, LIMBS AND ROOTS. CONTRACTOR SHALL BE RESPONSIBLE FOR ALL COSTS ASSOCIATED WITH REPAIR OR REMOVAL OF DAMAGED TREES DUE TO CONSTRUCTION ACTIVITIES.



STANDARD DETAILS FOR PUBLIC WORKS CONSTRUCTION

DRAWING No.

**SIDEWALK PLATE FOR  
TREE ROOT CLEARANCE**

**R-117**

APPROVED BY: JF DATE: 1/2013